

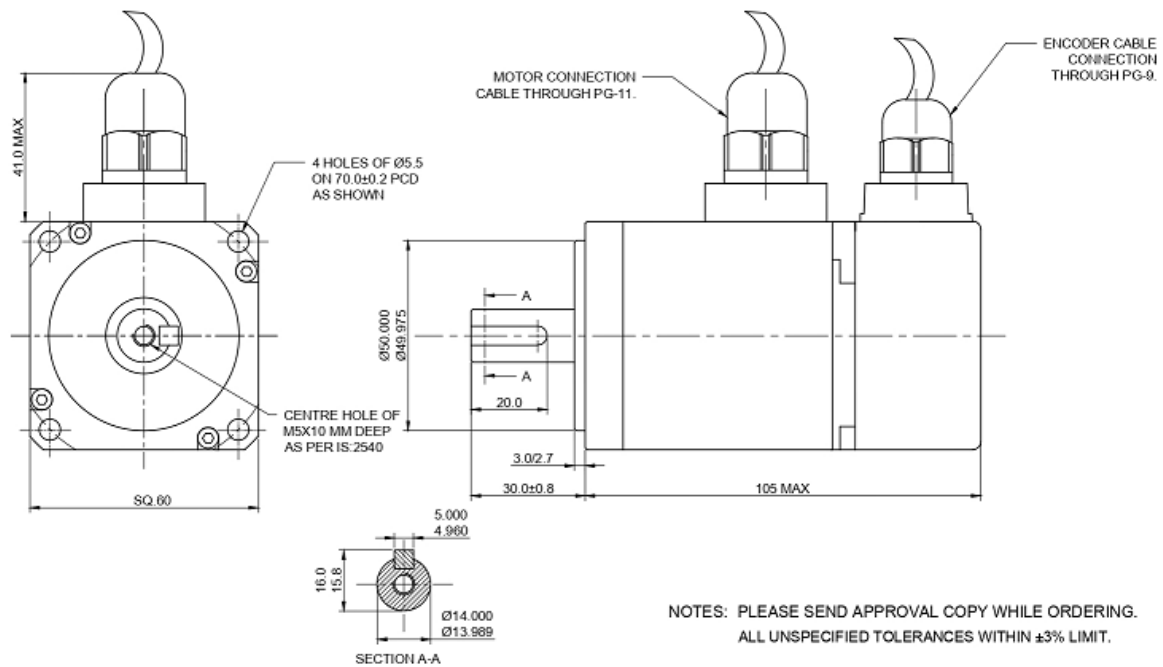


Brushless Servo Motors

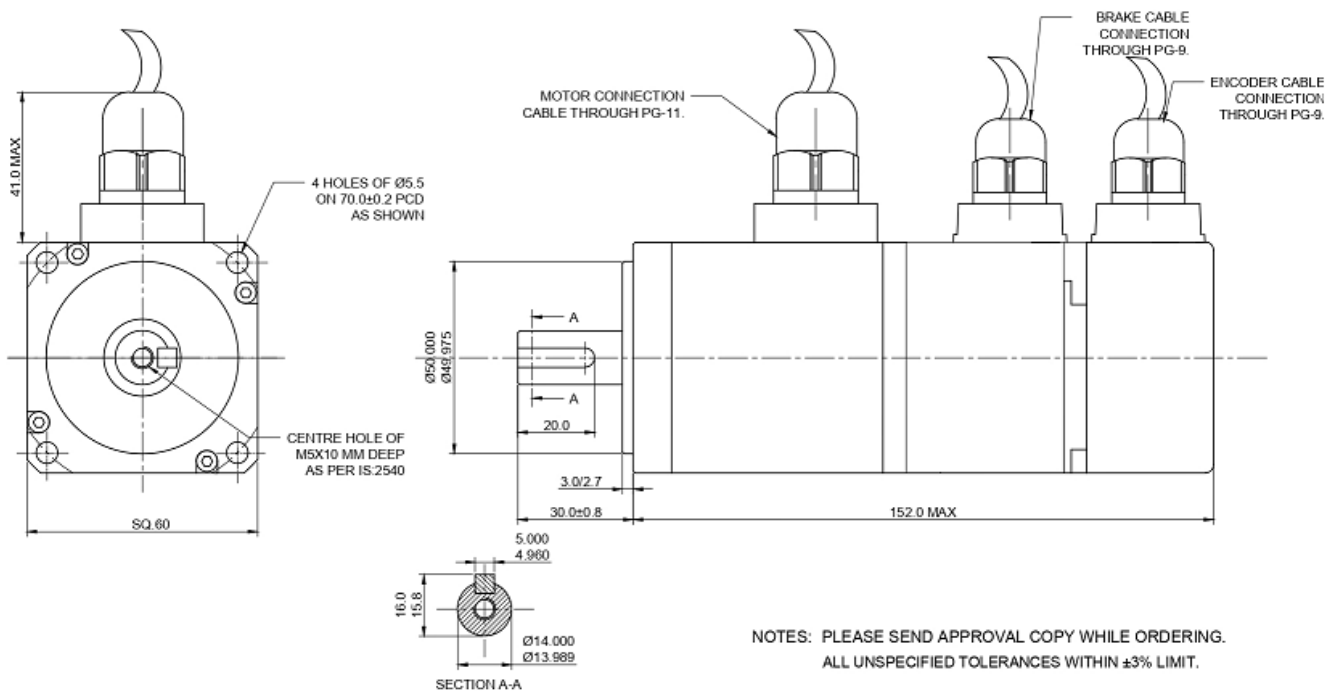
Performance Data

Model	060-200-048-30-I-L-X-X	060-200-0230-30-I-L-X-X
Typical Supply Voltage	48 V	230 V
Rated Power (W)	200	200
Rated Torque (Nm)	0.64	0.64
Peak Torque (Nm)	1.92	1.92
Rated Speed (rpm)	3000	
Maximum speed (rpm)	4000	
Rated Current (A)	4.5	1.6
Peak Current (A)	13.5	4.8
Rotor inertia (10 ⁻⁴ kg-m ²) (w/o brake)	0.221	0.221
Mechanical constant (ms)	1.4147	1.4147
Torque constant KT (Nm/A)	0.1391	0.426
Voltage constant KE (V/Krpm)	8	29
Armature resistance (ohm)	0.68	8.6
Armature Inductance (mH)	3.33	25
Electric constant (ms)	4.897	2.9
Insulation class	F	
Insulation resistance	>100Mohm, 500Vdc	
Insulation strength	1.8kVac, 1Sec	
Weight (kg) (w/o brake)	1.2	1.2
Weight (kg) (with brake)	1.5	1.5
Operating temperature (oC)	0 to 40 oC	
Storage temperature (oC)	10 to 80 oC	
IP rating	IP65 (Except for shaft opening, when not equipped with oil seal; Except for Connectors, when not equipped with waterproof connectors.)	
Compliance	RoHS	

- 10 Pole Design
- Star Connected Stator winding.
- Closed aluminum housing with aluminum bearing flanges.
- Bi-directional speed control with continuous output of 200 Watts.
- Various combination operation with gears, encoders and brakes.
- Customization available as per customer requirement.



200 Watts Motor without brake



200 Watts Motors with brake

Pin Details for Encoder Signal Connector

Pin. No	Lead Color	Output Signal
1	Blue	A
2	Green	B
3	Yellow/Black	\bar{Z}
4	White/Black	Hall \bar{W}
5	Blue/Black	\bar{A}
6	Green/Black	\bar{B}
7	Red	5 V
8	Brown	Hall U
9	Grey	Hall V
10	Grey/Black	Hall \bar{V}
11	Black	Ground
12	Black	Ground
13	Yellow	Z
14	White	Hall W
15	Brown/Black	Hall \bar{U}

Pin Details for Power Connector

Pin no.	Lead Color	Phase Signal
1	Red	R-Phase
2	Yellow	Y-Phase
3	Blue	B-Phase
4	Green	Earth